

Visit Us at :  
[www.seb.net.my](http://www.seb.net.my)



**ADDRESS :**  
Lot 1A-1C, Lorong Bunga Tanjung 1/3,  
Senawang Industrial Park, 70400 Seremban,  
Negeri Sembilan Malaysia

**CONTACT :**  
**T.** (606) 677 5898  
**F.** (606) 677 5162  
**E.** [enquiry@seb.net.my](mailto:enquiry@seb.net.my)

 **SUCCESS COMES FROM COLLECTIVE EFFORT**  
**WE BUILD AND WE CREATE**



## Companies Bankers



### United Overseas Bank (Malaysia) Bhd.

6, Jalan Kenari 5, Bandar Puchong Jaya, 47100 Puchong, Selangor.

## We Are Built To The Standards



## CONTENT

PG

01

EXPORT MARKET BASE ON END USER  
*Mission Statement*

02

BUSINESS ACTIVITIES /  
PRODUCT APPLICATION

03

INTRODUCTION  
*Our Company | Our Product & Services*

05

PRODUCT & SERVICES  
*Shop Fabrication  
Process Equipment*

05. Unfired Pressure Vessels  
07. Non-Pressurized Tanks  
09. Heat Exchangers  
11. Skid, Conveyors & Others

13

SHOP FABRICATION & SITE CONSTRUCTION  
13. Roof Structure  
14. Platform, Ladder & Handrail  
15. Storage Tanks  
16. Pipe Spool

17

SITE CONSTRUCTION  
17. Civil & Structural  
19. Equipment Installation  
21. Piping Connections  
25. Insulation Works  
26. Fire Fighting System Installation  
27. Turnkey Construction

31

LIST OF MAJOR MACHINERY

33

PHOTO GALLERY

35

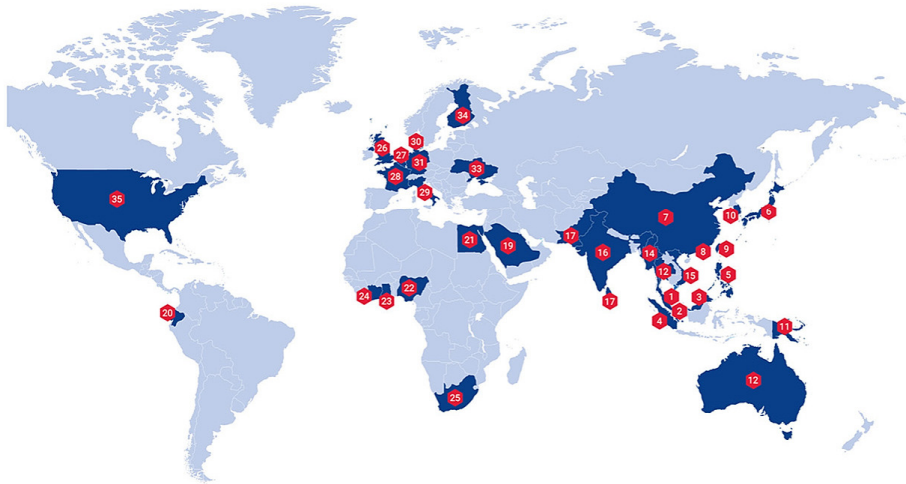
LICENCES & ACCREDITATION

36

LOCATION MAP



## EXPORT MARKET BASE ON END-USER



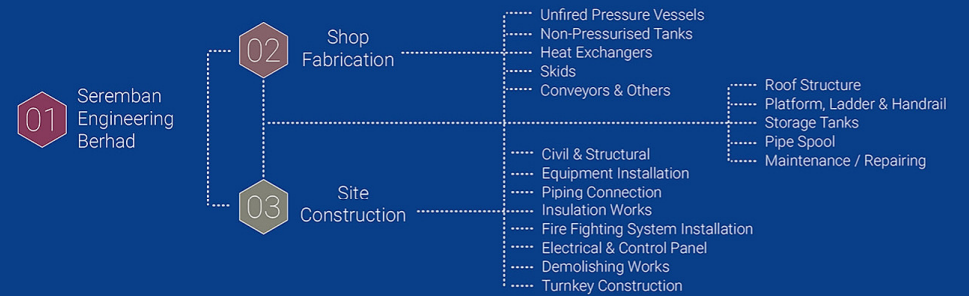
1 Malaysia	7 China	12 Thailand	19 Saudi Arabia	25 South Africa	31 Germany
2 Singapore	8 Hong Kong	14 Myanmar	20 Ecuador	26 United Kingdom	32 Netherlands
3 Brunei	9 Taiwan	15 Vietnam	21 Egypt	27 Belgium	33 Ukraine
4 Indonesia	10 South Korea	16 India	22 Nigeria	28 France	34 Finland
5 Philippines	11 Papua New Guinea	17 Sri Lanka	23 Ghana	29 Italy	35 United State of America
6 Japan	12 Australia	18 Pakistan	24 Cote D'Ivoire	30 Denmark	

## Mission Statement

To strive for quality and excellence, to achieve and fulfill the needs, requirements, standards and satisfaction of our clients.

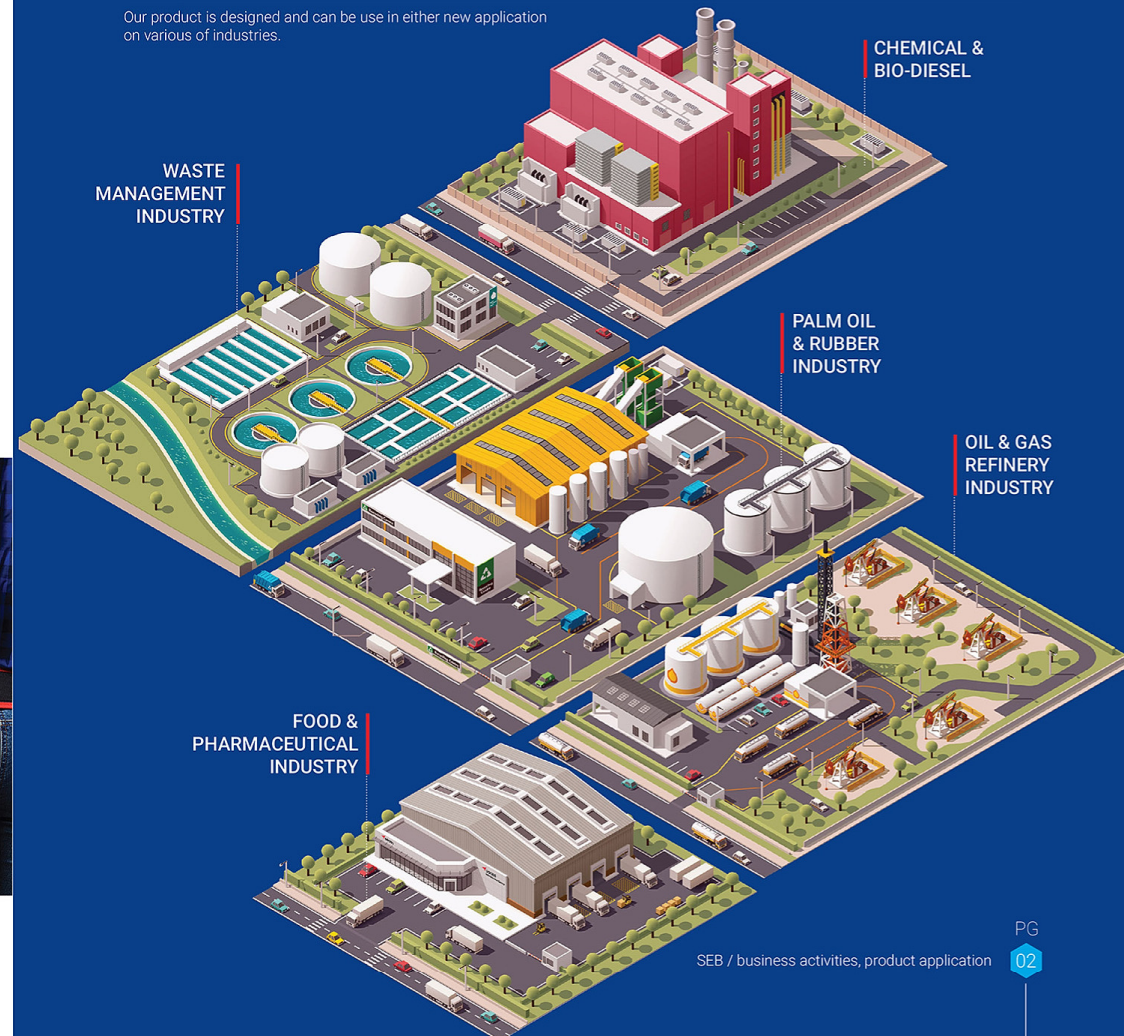


## BUSINESS ACTIVITIES



## PRODUCT APPLICATION

Our product is designed and can be use in either new application on various of industries.





## Our Company

Incorporated in 1979, SEREMBAN ENGINEERING BERHAD provides a host of engineering services. Our company was initially formed to cater to the needs of the automotive industries. In the 1990s we expanded, diversifying into fabrication, engineering support, maintenance and shutdown works for general industries.



## We Are **Bigger** Than Before

It is our mission to provide quality products and services at competitive rates and on time delivery, and Seremban Engineering can offer you a wide range of professional engineering services while meeting those criteria.

Moreover, our services and expertise extend to troubleshoot and solving mechanical or engineering problems. We also commission and run tests for plants or systems.

We are well established and have a good track record of work done for major clients, many of whom we have retained. Moreover, we have accumulated much valuable in-depth experience and broad knowledge which are carried through to current and future projects.

Our aim is to expand our core business by diversifying to various industries at the same time to provide you with products and services at the highest calibre. In order to do so, we improve our quality control (QC) system on a continuous basis and as a further ongoing exercise, bring on board more professionals and experts, increase our working space, modernize our equipment and upgrade our technology.



## We Are **Bolder** Than Before

The company is aiming higher to achieve greater height. We are bolder because we know what we can do and where our strengths are. It is our philosophy to give each project our personal attention and maximum diligence. Our goal is to have a successful partnership with you – and understanding your current and future needs is crucial.

Without a doubt technology plays a large part in a company such as ours and indeed substantial sums are invested in acquiring the most advanced technology for our plant with utilizing technology such as the CNC (Computer Numerical Control) equipment including a flame/plasma cutting machine, orbital welding system and a double column vertical machine (milling & drilling).

However, it is our view that people – our engineers, supervisors, technicians and support staff – are equally essential. Our management and technical teams, who are committed and highly trained, have more than fifty years' collective experience.

They bring to each project many specialized skills and much invaluable knowledge. Because of complementary integration between hardware and software, we believe that Seremban Engineering, and our products **ARE BUILT TO STANDARDS**



Our company is stable, dependable and our projects are well executed. We have been certified with the internationally recognized ASME (American Society of Mechanical Engineering) 'U', 'U2' & 'S' stamp. It is critical to us that we observe a very strict in-house Quality Control Management Programme to ensure that every product we deliver will exceed your specifications and standards.

At present we are accredited with CE mark, certified by Lloyd's, and we have been certified for the National Board R-Stamp and ISO 9001:2015 Quality Management System Standards certification on 21st of July 2009.

Over the years we earned ourselves a good reputation in the industry for our know-how and adaptness. We accept all work with confidence, assuring you of timely delivery, quality products and excellent customer service.

## Our Products & Services

1. Design, fabrication and installation of unfired pressure vessels, reactors, heat exchangers, deodorizers, receiver tanks, etc.
2. Fabrication and erection of steel structure and platforms.
3. Fabrication and installation of all kinds of piping works (Carbon steel, stainless steel and jacketed pipes).
4. Fabrication and installation of storage tanks, mixing tanks, hoppers and silos (mild steel and stainless steel).
5. Design, fabrication, installation, test and commission of electro-deposition painting system, latex foam mattress and pillow plant.
6. Fabrication of oil heaters (towers and columns) for oil and gas petrochemical industries in accordance with ASME standard - Code: Section VIII Div1.
8. Maintenance, services and shutdown works for plants, machinery parts and equipment.
9. Turnkey construction from engineering until plant hand-over.

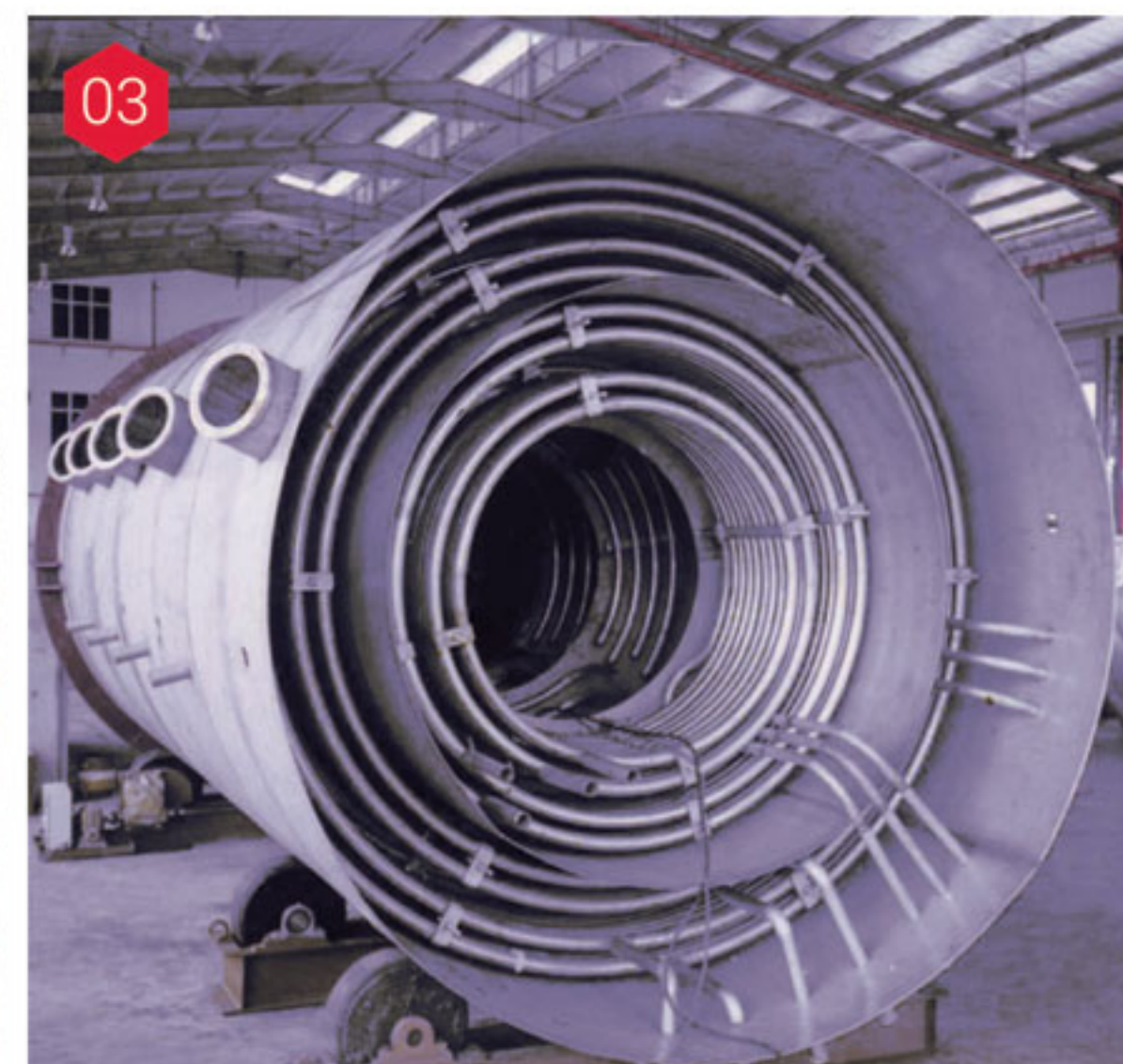
Other services:

- Testing - Non destruction examination (NDT)
- Hydrostatic and vacuum
- X-ray and gamma ray
- Dye penetrant
- Magnetic particle
- Ultrasonic
- Heat treatment and stress relieving





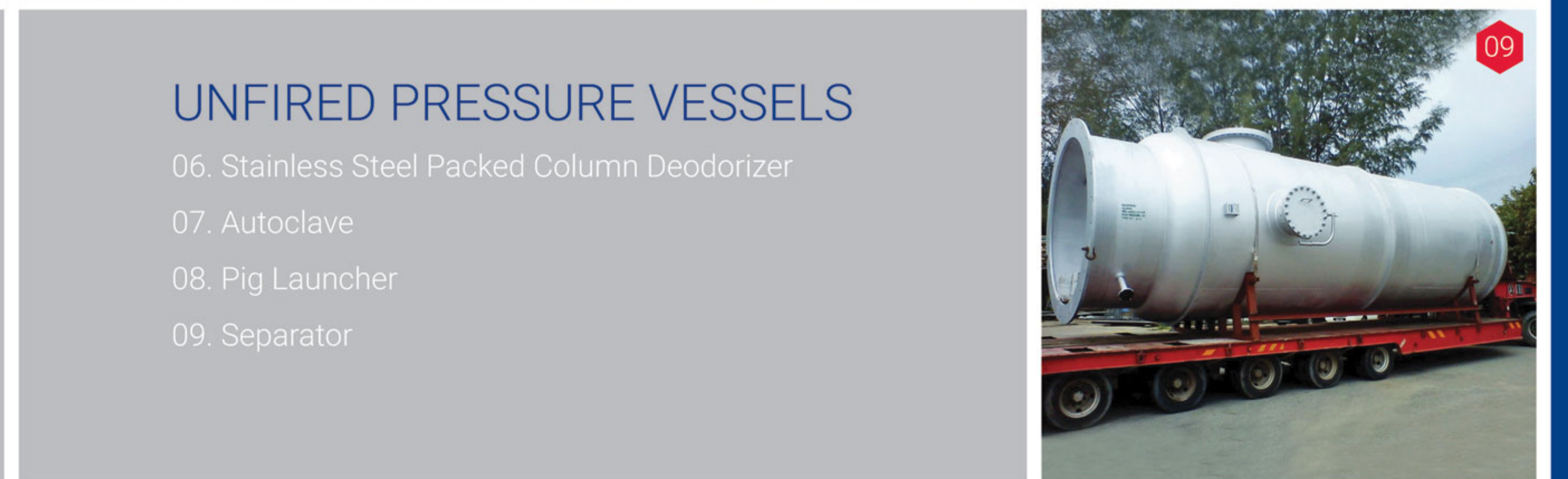
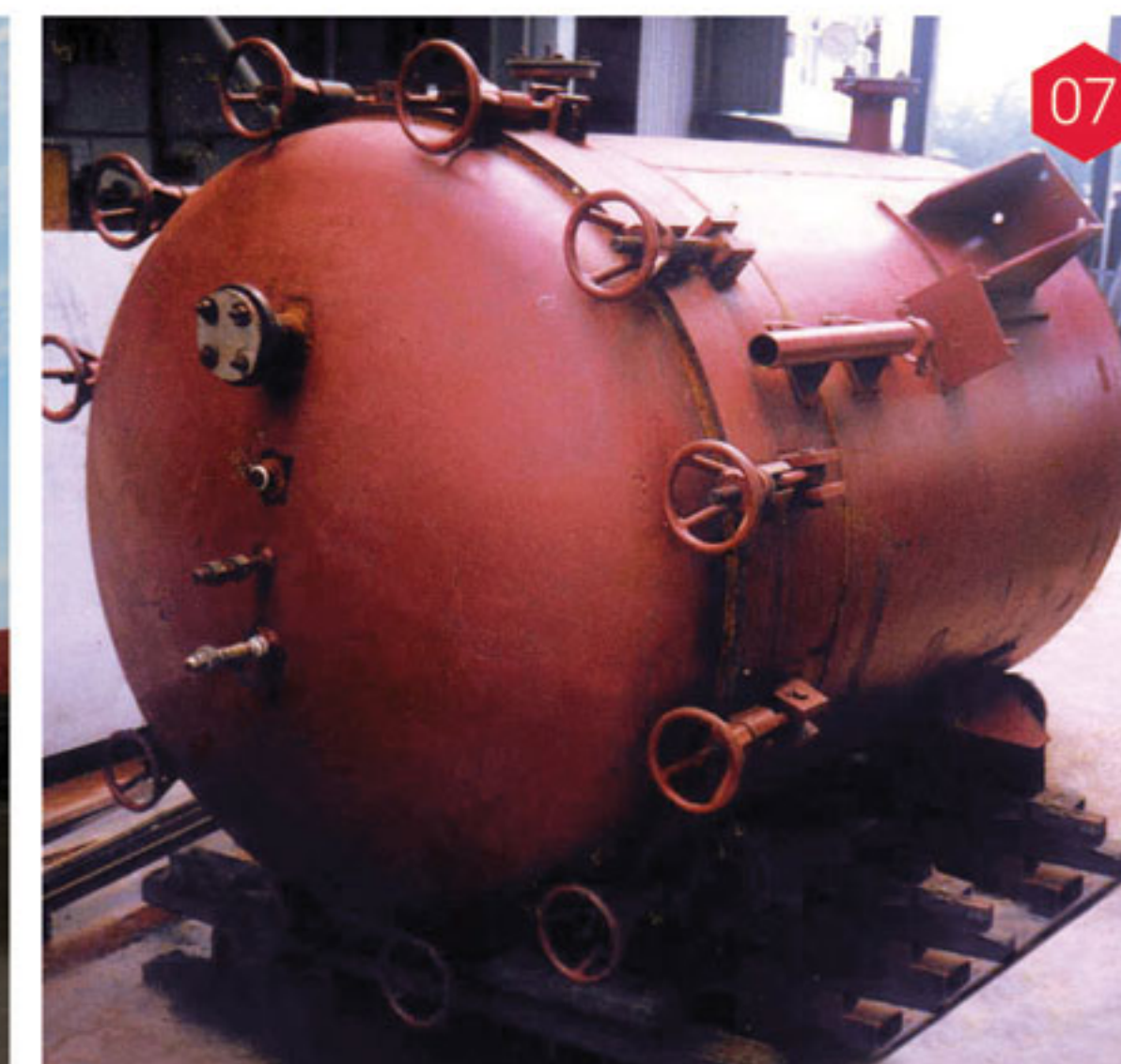
## Process Equipment



### UNFIRED PRESSURE VESSELS

- 01. Stainless Steel 316L Deodorizer
- 02. Stainless Steel Distillation Columns
- 03. Stainless Steel Deodorizer complete with Internal Coils
- 04. Stainless Steel Bleacher
- 05. Resin Reactors

## Process Equipment



### UNFIRED PRESSURE VESSELS

- 06. Stainless Steel Packed Column Deodorizer
- 07. Autoclave
- 08. Pig Launcher
- 09. Separator



## Process Equipment



### NON-PRESSURIZED TANKS

- 01. 25 ton SS Storage Tank
- 02. SS Silos
- 03. Glucose Reactor Tank
- 04. SS BFS & WFI Tanks
- 05. MS Latex Storage Tanks
- 06. MS Tank

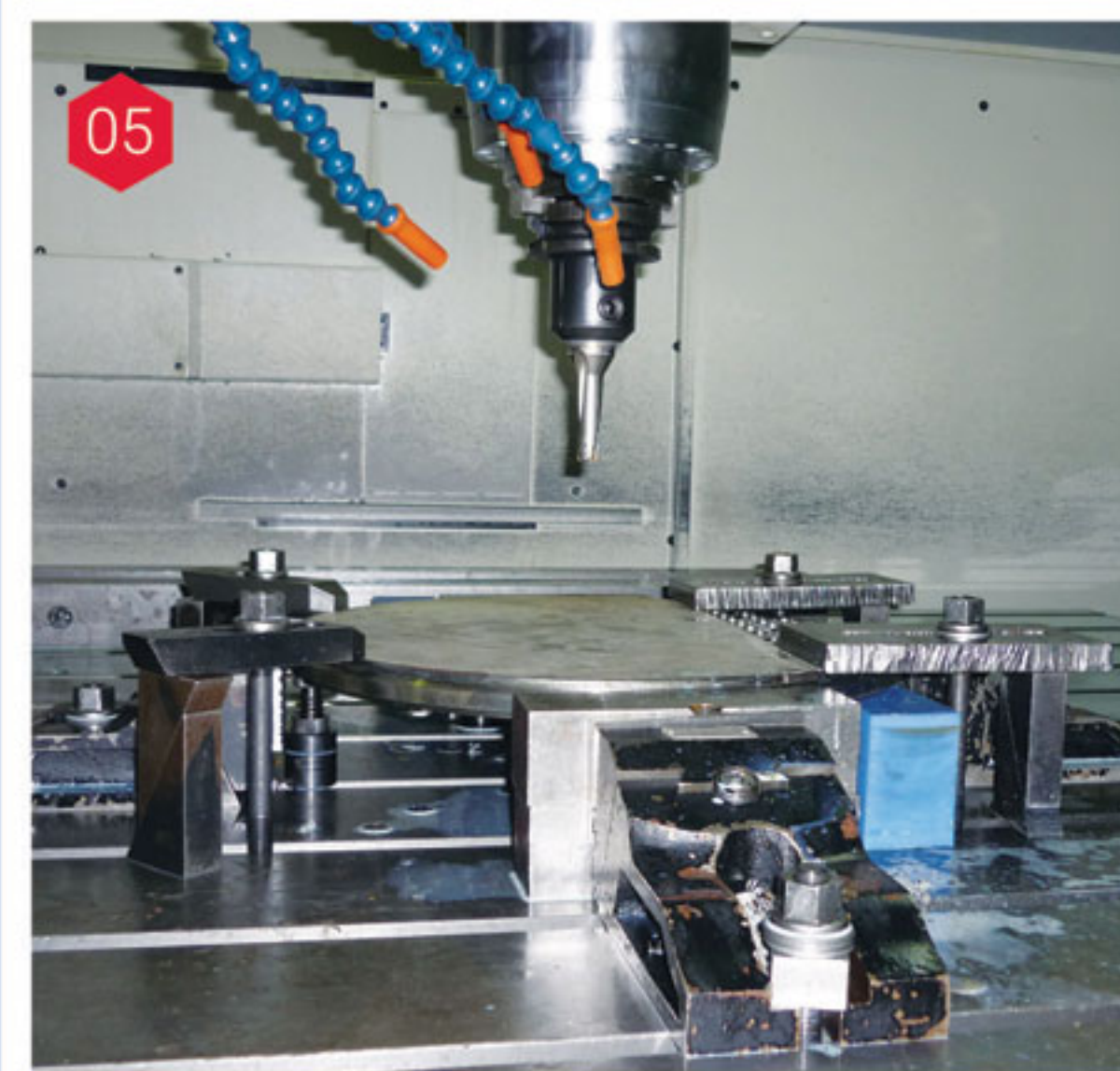
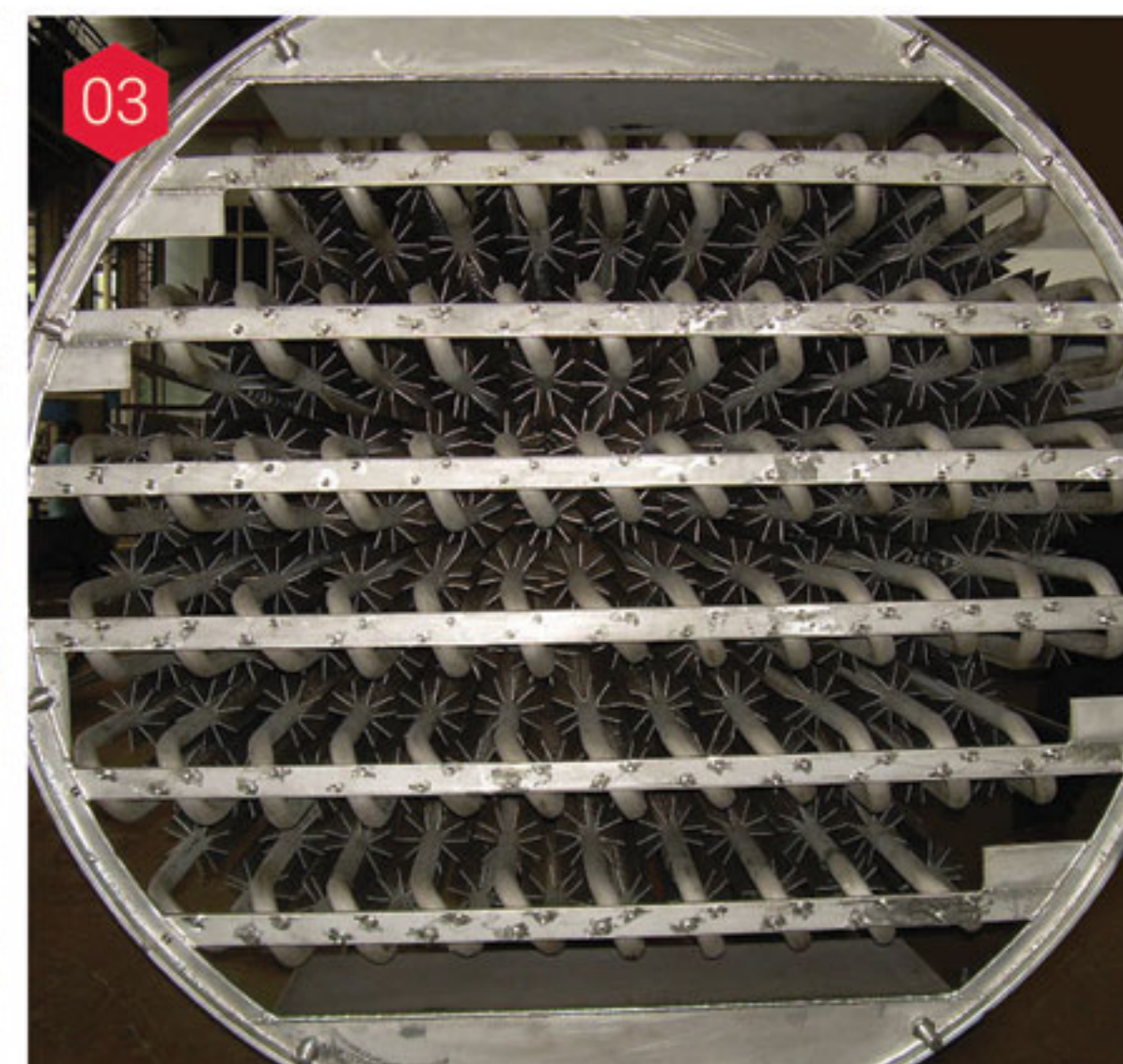
### NON-PRESSURIZED TANKS

- 07. Orange Silo - Bottom
- 08. Tank Farm including Hydrogen Peroxide Tank
- 09. 200 ton Silo Tank
- 10. 30 Nozzle Filling Tank





## Process Equipment



### HEAT EXCHANGERS

- |                                    |                                    |
|------------------------------------|------------------------------------|
| 01. Special Heat Exchanger         | 06. Special Heat Exchanger         |
| 02. HCHO Reactor                   | 07. Stainless Steel U-Tube Bundles |
| 03. Fin Tubes Condenser            | 08. Duplex Heat Exchanger          |
| 04. Heat Exchanger                 | 09. Orbimatic Welding System       |
| 05. CNC Drilling & Milling Machine | 10. Heat Exchanger                 |





## Process Equipment



### SKID, CONVEYORS & OTHERS

- |                     |                                 |
|---------------------|---------------------------------|
| 01. Toaster         | 06. Dryer                       |
| 02. Cooker          | 07. Skid with Tank              |
| 03. Blade           | 08. Skid                        |
| 04. Screw Conveyor  | 09. Skid                        |
| 05. Mobile Conveyor | 10. Steam Generator System Skid |



## Roof Structure



## Platform, Ladder & Handrail

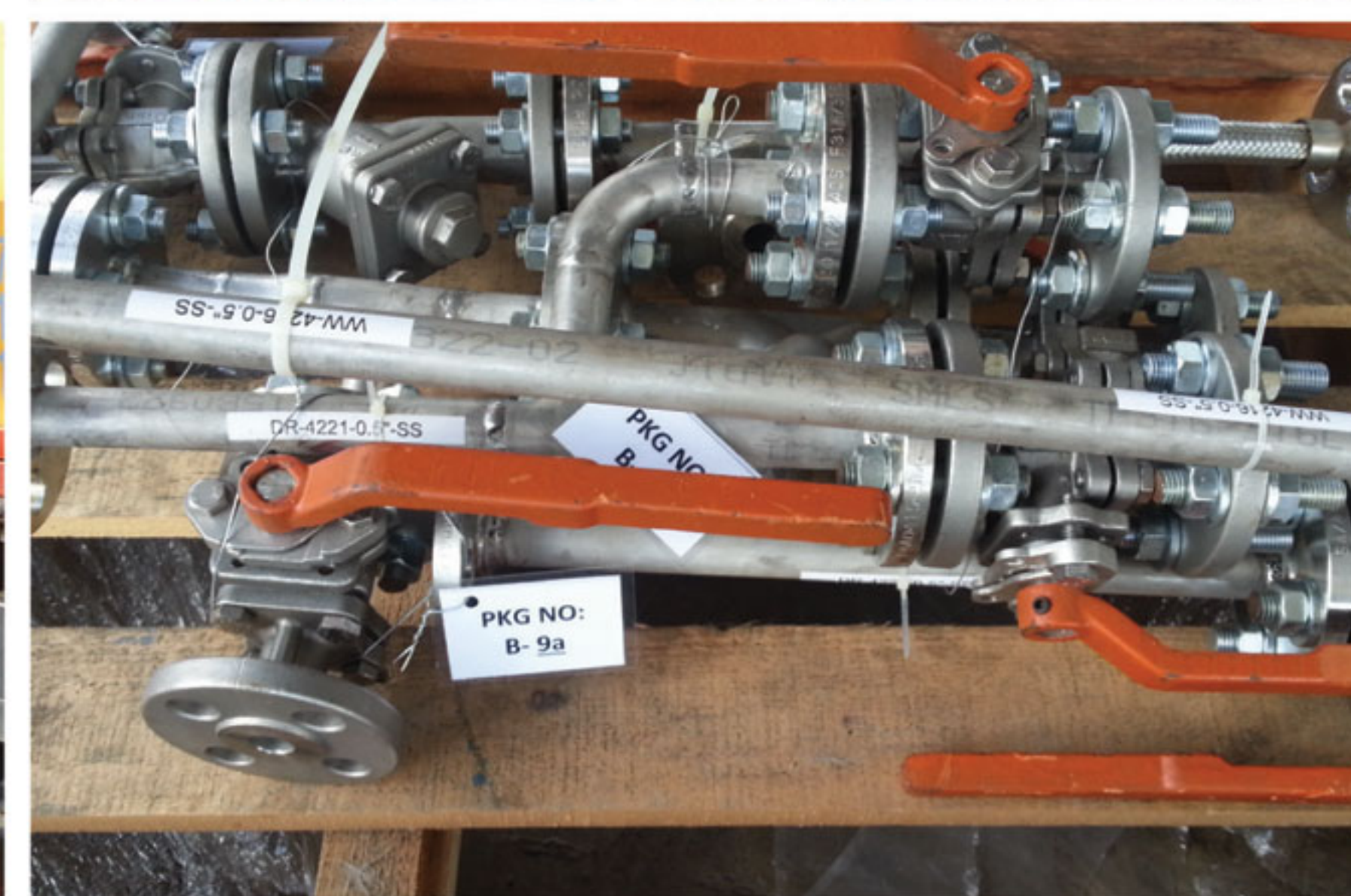




## Storage Tanks



## Pipe Spool







- 01. Office Building
- 02. Fire Water Pump House
- 03. Genset Room
- 04. Tank Foundation
- 05. Extension Office Building
- 06. Peroxide Store
- 07. Pump Shed
- 08. PAP Area



## Equipment Installation



- 01. Biodiesel Plant
- 02. Biodiesel Plant
- 03. Solvent Purification Tower
- 04. Waste Incineration Treatment Plant
- 05. Cooling Module with Exhaust Fan & Ducting
- 06. Frying Pan with Hood & Chimney System
- 07. Latex Glove Dipping Lines
- 08. Latex Glove Dipping Lines



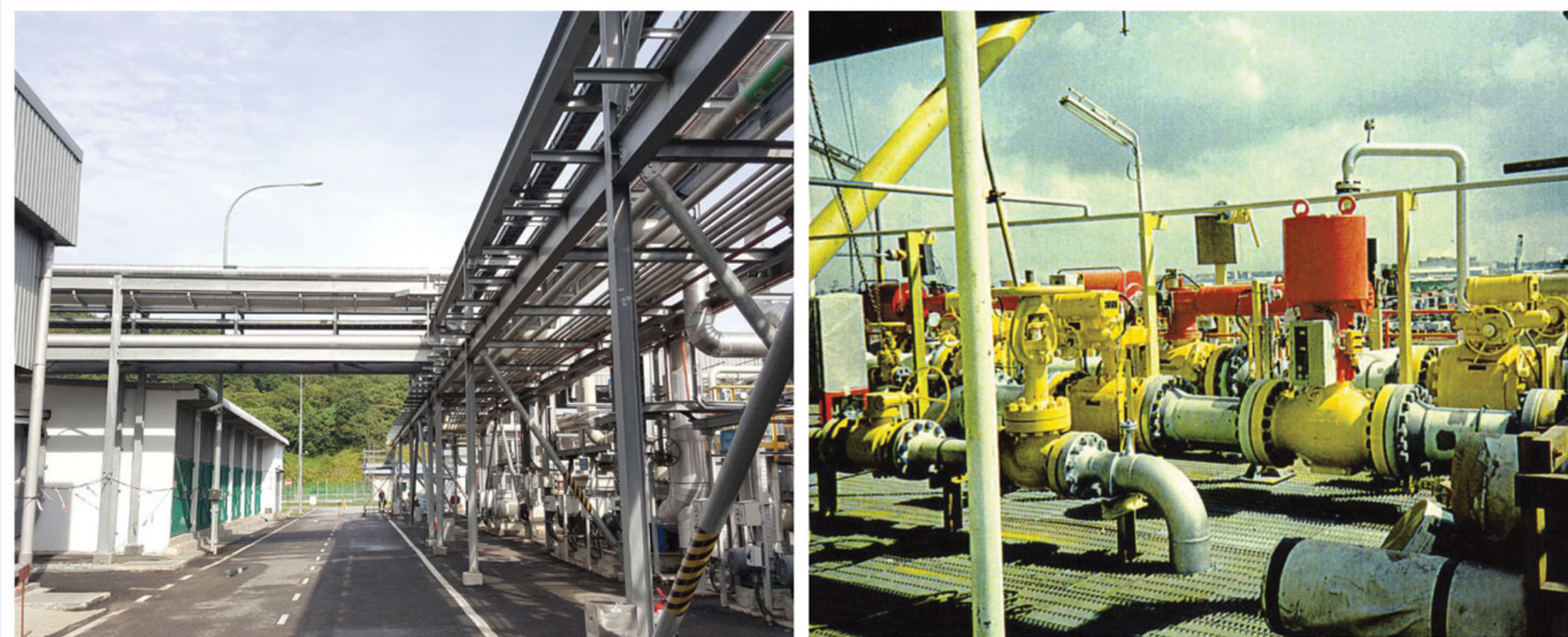
## Piping Connections



## Piping Connections



## Piping Connections



## Piping Connections





## Insulation Works



- 01. Offsetproduct T3 - Let Down Tank
- 02. Offsetproduct T5 Line - Piping
- 03. Steam Piping
- 04. Varnish Storage Tanks

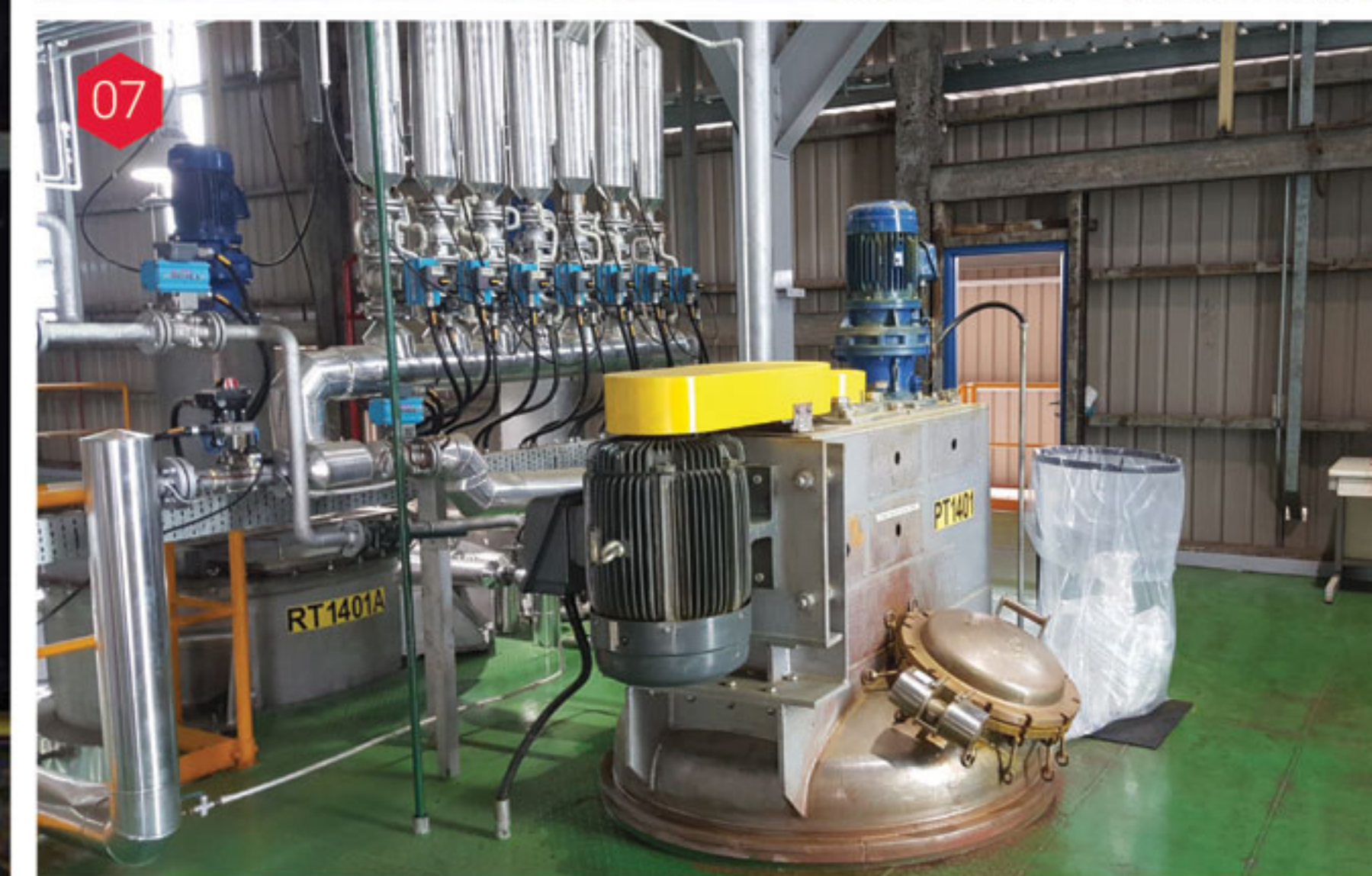
## Fire Fighting System Installation



- 01. Fire Fighting Tank
- 02. Fire Fighting System
- 03. Fire Fighting System
- 04. Fire Fighting System



## Turnkey Construction (Piping & Installation)



01, 02, 03,  
(SAMUR)  
Sabah Ammonia Urea Project

04, 05, 06, 07,  
Offset Ink Renovation Project



## Turnkey Construction



Production Lines Process  
Equipment & Piping

## Turnkey Construction



JM Chemical Purification  
Recycle Plant



## LIST OF MAJOR MACHINERY



### HARTFORD CNC Double Column Vertical

Table Working Space : 2,100 mm x 1,740 mm  
Cross Travel : 1,500 mm  
Quantity : 1 unit



### HARTFORD CNC Double Column Vertical

Model : HB-2190SG  
Table Working Surface : 2,100 mm x 1,740 mm  
Cross Travel : 1,970 mm | Quantity : 1 unit



### DAMA CNC Flame / Plasma Cutting Machine

One Plasma Holder & two Oxy-fuel Torches  
Gas cutting capacity thickness: 1 torch = 300mm,  
2 torches = 150mm | Quantity : 1 unit



### ERMAK Hydraulic Plate Bending Machine

Model : AP 3100-160  
Capacity : 100 ton | Max Working Plate :  
30mm thk x 3,200mm | Quantity : 2 units



### MG Hydraulic Plate Rolling Machine

Machine-Italy  
Max Working Plate Width : 3,000mm  
Rolling thickness x I.D = 32mm x > 2,500mm  
Quantity : 7 units



### Universal Vertical Lathe Machine

Max. Diameter : 2,800 mm  
Max Length : 6,000mm x 7,000kg  
Quantity : 1 unit



### Orbimatic Welding System for Tube-Tube Sheet

Model: TP 060  
Sizes: 10mm-70mm Tube size(ID)1  
Quantity: 3 units



### AKYPAK Hydraulic Section Roll Machine

Model: APK-120  
Max: 50 mm  
Quantity: 4 units



### GMS Hydraulic Press Brake / Shearing Machine

Model: GMC 3020  
Capacity: 20mm x 3,100mm  
Quantity: 2 units



### U-tube Bending Machine

Model: SB-50NC03  
Max: 25 mm  
Quantity: 1 unit



### DALIAN Lathe Machine

Model: C0371  
Length: 4,000 mm  
Chuck: 600 mm  
Quantity: 9 units



### RADIAL Drilling Machine (Z/J)

Model: 23050 x 16 (I)  
Max. Drill: 50 mm  
Quantity: 3 units



### Tube to Tube Welding Machine

Model: TOA190  
Max: 50 mm  
Quantity: 3 units



### Auto Welder

Brand: Lincoln Tractor  
Model: LT-7  
Quantity: 9 units



### LVD Orion Laser Cutting Machine

Model: Orion 3015  
Max. Sheet Size: 3,000mm x 1,500mm  
Max. Sheet Weight: 570 kg | Quantity: 1 unit



### Spray Painting Booth

Dimension :  
9,800mm L x 8,400mm W x 6,600mm H  
Quantity : 1 unit



### Sandblasting Room

Dimension :  
9,800mm L x 7,000mm W x 6,000mm H  
Quantity : 1 unit



### Overhead Crane

• 12.5 tons - 2 units  
• 10 tons - 17 units  
• 5 tons - 4 units  
• 3.2 tons - 1 unit  
• 3 tons - 1 units  
• 2 tons - 6 units

## LIST OF MAJOR MACHINERY



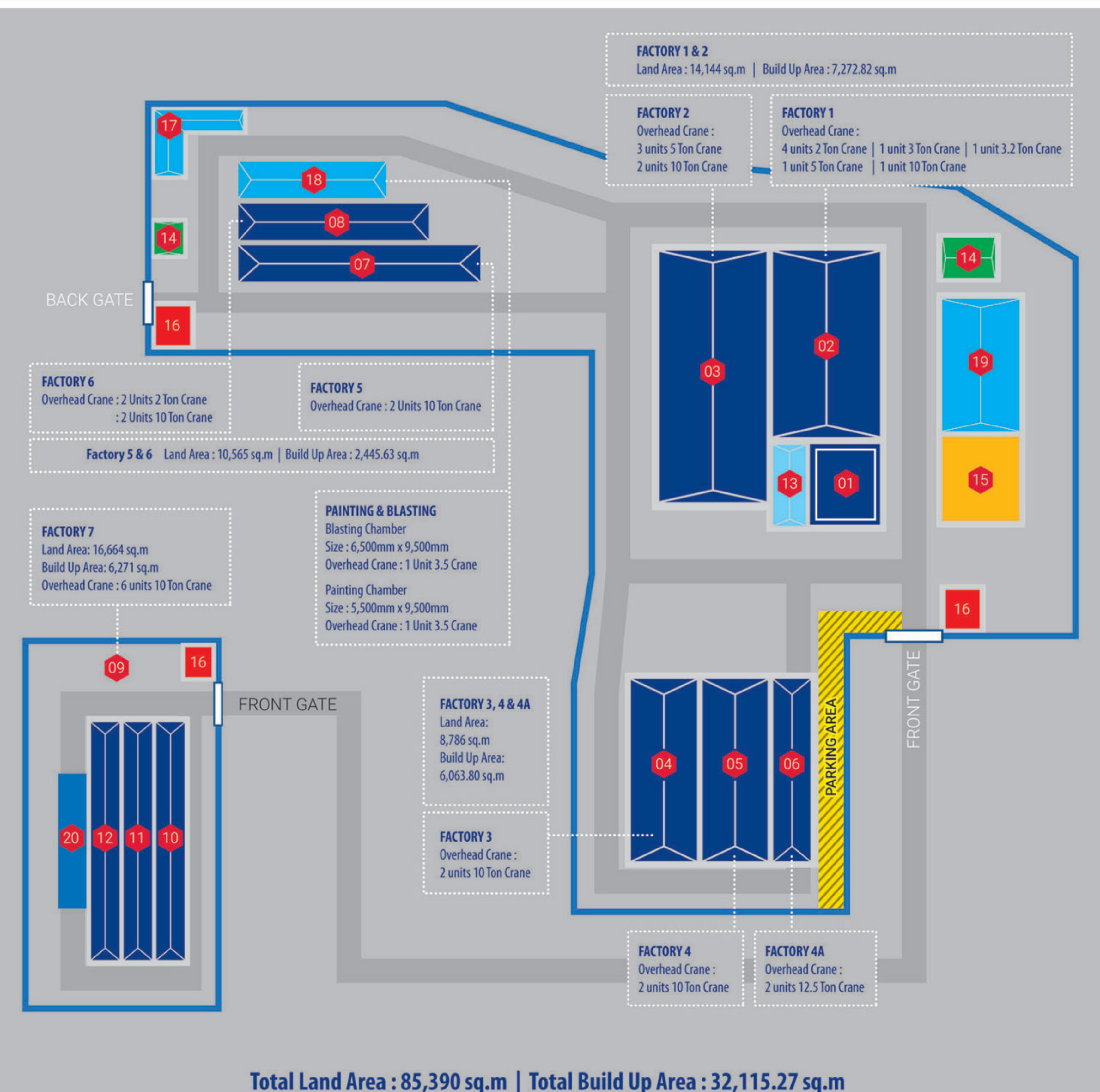
## Head Quarter



## Seremban Engineering Berhad Factory

- |                      |                                     |                               |
|----------------------|-------------------------------------|-------------------------------|
| 01. Corporate Office | 06. Factory 7 (Bay 1,2,3)           | 08. Lumut Workshop            |
| 02. Factory 1        | 07. Rawang Workshop 1 & 2           | Land Area : 28,430 sq.m       |
| 03. Factory 2        | Land Area : 6,801 sq.m              | Build Up Area : 7,089.12 sq.m |
| 04. Factory 3 & 4    | Build Up Area : 2,972.90 sq.m       |                               |
| 05. Factory 5 & 6    | Overhead Crane : 3 units of 10 tons |                               |

## Facilities ( Layout Plan )



- |                      |                |               |                 |                                 |
|----------------------|----------------|---------------|-----------------|---------------------------------|
| 01. Corporate Office | 05. Factory 4  | 09. Factory 7 | 13. Store       | 17. Storage Area                |
| 02. Factory 1        | 06. Factory 4A | 10. Bay 1     | 14. Toilet      | 18. Painting & Blasting Chamber |
| 03. Factory 2        | 07. Factory 5  | 11. Bay 2     | 15. Canteen     | 19. Raw Material Storage Area   |
| 04. Factory 3        | 08. Factory 6  | 12. Bay 3     | 16. Guard House | 20. Painting & Blasting Chamber |



## Our Quality & Assurance

We strictly observe an in-house Quality Control Management Programme to ensure that every product we deliver to our customers meets your specifications. Our many accreditations attest to the highest quality standards.



1. ASME U Stamp
2. ASME U2 Stamp
3. ASME S Stamp
4. National Board - U Stamp
5. National Board - R Stamp
6. CE MARK (Certified by Lloyd's)
7. & 8. ISO 9001 : 2015
9. CIDB Malaysia
10. JKKP License for Fabrication of Unfired Pressure Vessels, Boiler Repair. Registration No. BT21/277
11. JKKP License for Gas Contractor (Piping) Registration No. BP21/163

